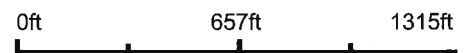


Aerial Map - Dale E. Oppedal



©2021 AgriData, Inc

Map Center: 43° 12' 4.52, -94° 54' 8.28



Maps Provided By:

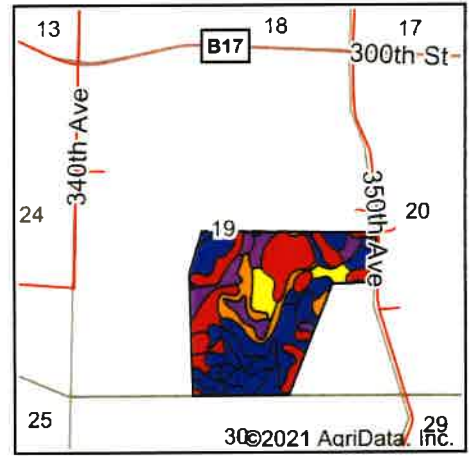
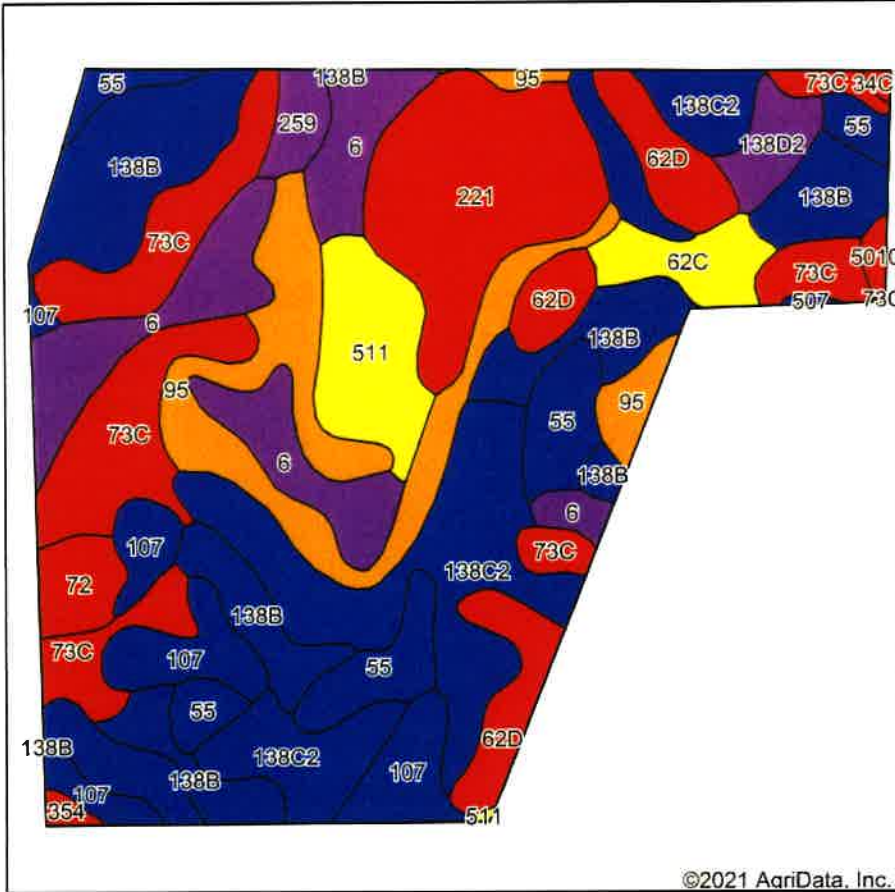


© AgnData, Inc 2021 www.AgnDataInc.com

19-97N-34W
Palo Alto County
Iowa



Soils Map - 133.4 Tillable - Oppedal



State: **Iowa**
 County: **Palo Alto**
 Location: **19-97N-34W**
 Township: **Lost Island**
 Acres: **133.4**



Maps Provided By:



Soils data provided by USDA and NRCS.

Area Symbol: IA147, Soil Area Version: 27

Code	Soil Description	Acres	Percent of field	CSR2 Legend	Non-Irr Class	CSR2**	CSR	Oats Bu	Spring wheat Bu	
138C2	Clarion loam, 6 to 10 percent slopes, moderately eroded	20.40	15.3%		IIIe	83	58			
138B	Clarion loam, 2 to 6 percent slopes	18.53	13.9%		Ile	89	76			
73C	Hawick gravelly sandy loam, 6 to 12 percent slopes	16.19	12.1%		IVs	31	5			
6	Okoboji silty clay loam, 0 to 1 percent slopes	12.80	9.6%		IIIw	59	54			
95	Harps clay loam, 0 to 2 percent slopes	12.71	9.5%		IIw	72	59			
221	Klossner muck, 0 to 1 percent slopes	12.24	9.2%		IIIw	32	47			
55	Nicollet clay loam, 1 to 3 percent slopes	8.12	6.1%		Iw	89	84			
107	Webster clay loam, 0 to 2 percent slopes	8.11	6.1%		IIw	86	79			
62D	Storden loam, 10 to 16 percent slopes, moderately eroded	7.36	5.5%		IVe	41	39			
511	Blue Earth mucky silt loam, 0 to 1 percent slopes	5.60	4.2%		IIIw	66	56			
62C	Storden loam, 6 to 10 percent slopes, moderately eroded	2.96	2.2%		IIIe	64	48			
138D2	Clarion loam, 9 to 14 percent slopes, moderately eroded	2.08	1.6%		IIIe	54	51			
72	Estherville loam, 0 to 2 percent slopes	2.07	1.6%		IIIs	23	53			
485B	Spillville loam, 2 to 5 percent slopes	1.64	1.2%		Ile	88	76			
259	Biscay clay loam, 0 to 2 percent slopes	1.46	1.1%		IIw	52	70	2	2	
5010	Pits, Sand, and Gravel	0.46	0.3%			0	0			
354	Marsh	0.36	0.3%		VIIw	9	5			
34C2	Estherville sandy loam, 5 to 9 percent slopes, moderately erode	0.18	0.1%		IVe	10	5			
507	Canisteo clay loam, 0 to 2 percent slopes	0.13	0.1%		IIw	84	74			
Weighted Average						2.74	64.3	54	*-	*-

**IA has updated the CSR values for each county to CSR2.

*c: Using Capabilities Class Dominant Condition Aggregation Method

Soils data provided by USDA and NRCS.