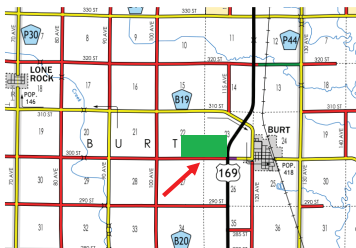


LAND FOR SALE

HALF SECTION FARM

313.7 GROSS ACRES m/l

KOSSUTH COUNTY, IOWA



FSA Certified Acres:
303.63 • Township: Burt

Annual Real Estate
Taxes: \$8,666

Primary Soils: Clarion,
Nicollet, Canisteo &
Webster

CSR2: 81.8

LEGAL DESCRIPTION –

The Southeast Quarter (SE ¼) of Section Twenty-Two (22) & The Southwest Quarter (SW¼) Section Twenty-Three (23), Burt Township, Range Twenty-Nine (29) West of the 5th P.M.

DETAILS:

Cotton Grave Farm Management & Realty is pleased to be selling this highly productive farm in Kossuth Co. IA. The Kriethe farm is located in Burt township and minutes from multiple ag real retail grain facilities. Located directly off Hwy 169, west of Burt Iowa. The farm has an open lease for the 2024 crop season and is available for immediate use. Come drive by this excellent half section property for your next investment opportunity.



Mike Koenecke
Agent

Call today to learn more
about the opportunities
on this farm for your next
investment.

712.363.6333



9 East State St. • Algona, IA 50511
WWW.COTTONGRAVE.COM

Investing in Iowa Agland... Call us Today!